

# NLOPAC-R7MSTW

7" AC Opal LED Surface Mounted LED with PIR Motion Sensor & Selectable CCT

Source: 14W LED  
950lm

Type

Project

Catalog No.

Notes

## PRODUCT DESCRIPTION

The AC Opal LED Series LED fixture is designed to surface mount over a standard junction box. The low profile luminaire produces even illumination and integral PIR sensor activates when motion is detected. After one minute of no motion, the fixture automatically turns off.

## FEATURES

- Integral PIR Motion Sensor
- AC LED (No Driver)
- Five color temperatures in each fixture (2700K / 3000K / 3500K / 4000K / 5000K)
- Mount on standard junction box
- Can be used with recessed housings when used with optional retrofit kit
- cETLus Listed for Wet Locations

## SPECIFICATION

**Construction:** One piece die-cast aluminum formed luminaire. Aluminum body dissipates heat and extends life. Polycarbonate lens with integrated PIR motion sensor.

**Mounting:** Surface mount luminaire is compatible with 4" junction boxes and 1/2" deep pancake boxes for ceiling or wall mount applications. Luminaires can also be retrofit over 5" or 6" recessed housings with retrofit kit (ordered separately).

**PIR Motion Sensor:** PIR (passive infrared) motion sensor for easy on/off operation and can detect motion up to 16' diameter away (unobstructed) when mounted at 8'. Luminaire has two motion sensor options, which can be changed in the field.  
Option 1: **100% - Off** = After one minute of no motion, the luminaire will automatically turn off.  
Option 2: **100% - 50% - Off** = After one minute of no motion, the luminaire will automatically dim to 50%, after another minute of no motion, the luminaire will turn off. (*Note: Preset to Option 2*)

**Ratings:** IC rated when used with a electrical junction box rated for direct contact with insulation. Fire rated when used with a fire rated junction box.

## ELECTRICAL

**Input Voltage:** 120VAC 60Hz

**Lumens / Wattage:** 950lm / 14W (0.5W stand by power)

**Color Temperature:** Selectable CCT: 2700K / 3000K / 3500K / 4000K / 5000K (*Note: Preset to 3000K*)

**Color Rendering Index:** 90+ CRI

**Operating temperature:** 0°C to 40°C

**Dimming:** Non-Dimmable

## ACCESSORIES

**NLOPAC-4BKT-2:** Universal Bracket for 3" junction boxes

**NLOPAC-6RTWRECKIT:** Retrofit Kit for 5" and 6" recessed housings

## LISTINGS

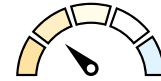
- cETLus Listed for Wet Locations
- 5-Year Limited Warranty
- Suitable for use in closets when installed in accordance to NEC Section 410.16 (A)(1) and 410.16 (C)(1).



## Performance Data

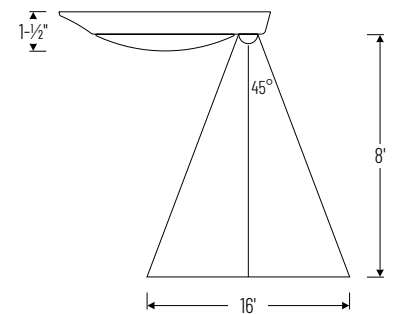
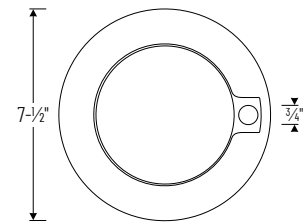
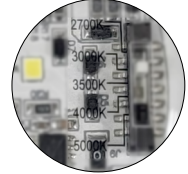
Part Number	Lumens	CCT
<b>NLOPAC-R7MSTWW</b>	851lm	2700K
<b>NLOPAC-R7MSTWW</b>	921lm	3000K
<b>NLOPAC-R7MSTWW</b>	987lm	3500K
<b>NLOPAC-R7MSTWW</b>	991lm	4000K
<b>NLOPAC-R7MSTWW</b>	895lm	5000K

## PRODUCT IMAGES AND DIMENSIONS



### Selectable CCT

Five position sliding switch  
27K / 30K / 35K / 40K / 50K



Range of Motion Sensor  
(not to scale)

## 7" AC Opal with PIR Motion Sensor & Selectable CCT

Description

**NLOPAC-R7MSTWW** = White Finish

## Optional Accessories

Description

**NLOPAC-4BKT-2** = Universal Bracket for 3" Junction Boxes

**NLOPAC-6RTWRECKIT** = Retrofit Kit for 5" & 6" Recessed Housings

Example: **NLOPAC-R7MSTWW** = 7" AC Opal with PIR Motion Sensor, 950lm / 14W, Selectable CCT, White finish

# PHOTOMETRICS

## 7" AC Opal LED Surface Mounted LED with PIR Motion Sensor & Selectable CCT

Type

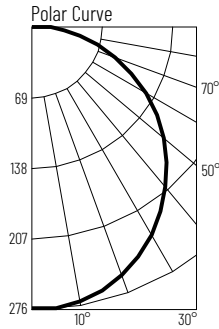
Project

Catalog No.

Notes

### Test Information

Test Number: NTS230R1  
 Part Number: NLOPAC-R7MSTWW  
 Beam Spread: 115° Wide Flood  
 Lumens: 851lm  
 Wattage: 13.39W  
 Efficacy: 64lpw  
 CCT / CRI: 2700K / 90 CRI  
 Spacing Criteria (0°-180°): 1.28  
 Spacing Criteria (90°-270°): 1.28



### Illuminance at a Distance

Distance from Luminaire	FC at Nadir	Beam Diameter
4'	17.2fc	12'-7"
6'	7.6fc	19'
8'	4.3fc	25'-4"
10'	2.8fc	31'-7"
12'	1.9fc	37'-11"

### Zonal Lumen Summary

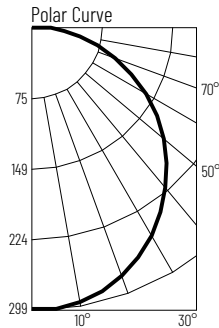
Zone	Lumens	% Luminaire
0-30	214	25.1
0-40	351	41.3
0-60	629	73.9
0-90	843	99
90-180	8	1
0-180	851	100

### Candela Table

Vertical Angles	Candela
0	275
5	273
15	264
25	246
35	220
45	187

### Test Information

Test Number: NTS231R1  
 Part Number: NLOPAC-R7MSTWW  
 Beam Spread: 115° Wide Flood  
 Lumens: 921lm  
 Wattage: 13.5W  
 Efficacy: 68lpw  
 CCT / CRI: 3000K / 90 CRI  
 Spacing Criteria (0°-180°): 1.28  
 Spacing Criteria (90°-270°): 1.28



### Illuminance at a Distance

Distance from Luminaire	FC at Nadir	Beam Diameter
4'	18.6fc	12'-7"
6'	8.3fc	19'
8'	4.7fc	25'-4"
10'	3fc	31'-7"
12'	2.1fc	37'-11"

### Zonal Lumen Summary

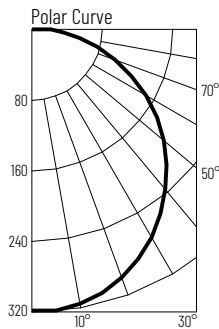
Zone	Lumens	% Luminaire
0-30	232	25.1
0-40	380	41.3
0-60	680	73.9
0-90	913	99
90-180	9	1
0-180	921	100

### Candela Table

Vertical Angles	Candela
0	297
5	295
15	286
25	267
35	238
45	202

### Test Information

Test Number: NTS232R1  
 Part Number: NLOPAC-R7MSTWW  
 Beam Spread: 115° Wide Flood  
 Lumens: 987lm  
 Wattage: 13.69W  
 Efficacy: 72lpw  
 CCT / CRI: 3500K / 90 CRI  
 Spacing Criteria (0°-180°): 1.28  
 Spacing Criteria (90°-270°): 1.28



### Illuminance at a Distance

Distance from Luminaire	FC at Nadir	Beam Diameter
4'	19.9fc	12'-7"
6'	8.9fc	19'
8'	5fc	25'-4"
10'	3.2fc	31'-7"
12'	2.2fc	37'-11"

### Zonal Lumen Summary

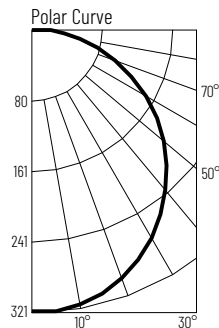
Zone	Lumens	% Luminaire
0-30	248	25.1
0-40	407	41.3
0-60	729	73.9
0-90	977	99
90-180	9	1
0-180	987	100

### Candela Table

Vertical Angles	Candela
0	319
5	316
15	307
25	286
35	255
45	216

### Test Information

Test Number: NTS233R1  
 Part Number: NLOPAC-R7MSTWW  
 Beam Spread: 115° Wide Flood  
 Lumens: 991lm  
 Wattage: 13.68W  
 Efficacy: 72lpw  
 CCT / CRI: 4000K / 90 CRI  
 Spacing Criteria (0°-180°): 1.28  
 Spacing Criteria (90°-270°): 1.28



### Illuminance at a Distance

Distance from Luminaire	FC at Nadir	Beam Diameter
4'	20fc	12'-7"
6'	8.9fc	19'
8'	5fc	25'-4"
10'	3.2fc	31'-7"
12'	2.2fc	37'-11"

### Zonal Lumen Summary

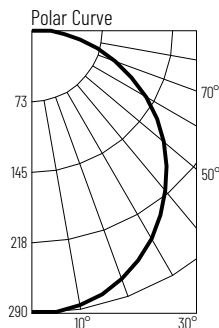
Zone	Lumens	% Luminaire
0-30	249	25.1
0-40	409	41.3
0-60	732	73.9
0-90	981	99
90-180	10	1
0-180	991	100

### Candela Table

Vertical Angles	Candela
0	320
5	318
15	308
25	287
35	256
45	217

### Test Information

Test Number: NTS234R1  
 Part Number: NLOPAC-R7MSTWW  
 Beam Spread: 115° Wide Flood  
 Lumens: 895lm  
 Wattage: 13.4W  
 Efficacy: 67lpw  
 CCT / CRI: 5000K / 90 CRI  
 Spacing Criteria (0°-180°): 1.28  
 Spacing Criteria (90°-270°): 1.28



### Illuminance at a Distance

Distance from Luminaire	FC at Nadir	Beam Diameter
4'	18.1fc	12'-7"
6'	8fc	19'
8'	4.5fc	25'-4"
10'	2.9fc	31'-7"
12'	2fc	37'-11"

### Zonal Lumen Summary

Zone	Lumens	% Luminaire
0-30	225	25.1
0-40	370	41.3
0-60	661	73.9
0-90	887	99
90-180	9	1
0-180	895	100

### Candela Table

Vertical Angles	Candela
0	289
5	287
15	278
25	259
35	231
45	196