

NSLIM-4REGL1TWPW

4" Regressed Slim LED Surface Mount with Selectable CCT

Source: 13W LED
950lm

Type

Project

Catalog No.

Notes

PRODUCT DESCRIPTION

Ultra slim regressed LED surface mount boasts a low-profile form factor, lending it a sleek design. Regressed light source gives the appearance of a recessed luminaire. The Slim is ideal for residential or commercial spaces and creates a polished aesthetic.

FEATURES:

- Five color temperatures in each fixture (2700K / 3000K / 3500K / 4000K / 5000K)
- 5-year limited warranty
- cULus listed and classified for indoor wet locations

SPECIFICATION

Construction: Aluminum surface mounted luminaire dissipates heat away from electrical components. An integral CCT switch changes the color temperature from 2700K to 5000K. Luminaire comes standard with a matte powder white round trim.

Mounting: Metal bracket used to surface mount over 4" metallic or non-metallic octagonal junction box and 4" round without lip.

ELECTRICAL

Input Voltage: 120VAC

Lumens / Wattage: 950lm / 13W

Color Temperature: Selectable CCT: 27K / 30K / 35K / 40K / 50K (Note: Preset to 3000K)


Color Rendering Index: 90+ CRI

Operating Temperature: -20°C to 40°C

Dimming: Triac (leading edge) or ELV (trailing edge)

[Click Here](#) or check complete dimmer list at www.NoraLighting.com in the "Compatibility" page under "Resources" tab

COMPATIBLE HOUSING

 NFJB-R4* ICAT Junction Box

LABELS AND LISTINGS

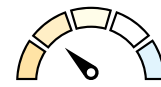
- cETLus listed and classified for indoor wet locations
- [5-Year Limited Warranty](#)
- Meets ASTM-E283 Air-Tight requirements
- FCC compliant
- Certified to the high efficacy requirements of California Title 24 JA8-2022
- Suitable for use in closets when installed in accordance to NEC Section 410.16 (A)(1) and 410.16 (C)(1)



Performance Data

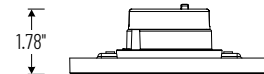
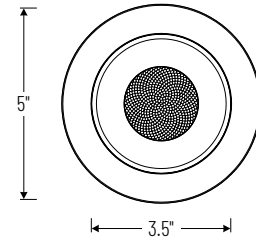
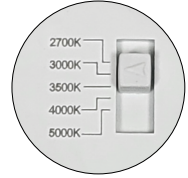
Part Number	Lumens	CCT
NSLIM-4REGL1TWPW	839lm	2700K
NSLIM-4REGL1TWPW	893lm	3000K
NSLIM-4REGL1TWPW	947lm	3500K
NSLIM-4REGL1TWPW	952lm	4000K
NSLIM-4REGL1TWPW	88lm	5000K

PRODUCT IMAGES AND DIMENSIONS



Selectable CCT

Five position sliding switch
27K / 30K / 35K / 40K / 50K



4" Regressed Slim LED Surface Mount with Selectable CCT

Face Plate Finish

NSLIM-4REGL1TWPW = Matte Powder White finish

Example: NSLIM-4REGL1TWPW = 4" Regressed Slim LED Surface Mount with Selectable CCT, Matte Powder White Finish

PHOTOMETRICS

4" Regressed Slim LED Surface Mount with Selectable CCT

Type

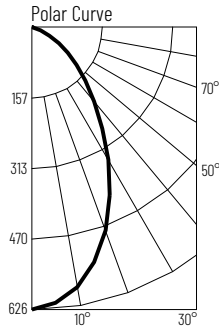
Project

Catalog No.

Notes

Test Information

Test Number: NTS235R1
 Part Number: NSLIM-4REGLITWMPW
 Beam Spread: 64° Narrow Flood
 Lumens: 839lm
 Wattage: 12.73W
 Efficacy: 66lpw
 CCT / CRI: 2700K / 90 CRI
 Spacing Criteria (0°-180°): 0.92
 Spacing Criteria (90°-270°): 0.92



Illuminance at a Distance

Distance from Luminaire	FC at Nadir	Beam Diameter
4'	39.1fc	5'
6'	17.4fc	7-6"
8'	9.8fc	10'
10'	6.3fc	12-6"
12'	4.4fc	15'

Zonal Lumen Summary

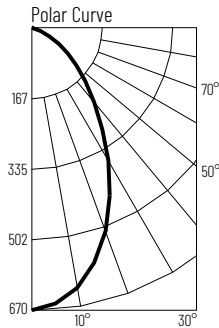
Zone	Lumens	% Luminaire
0-30	397	47.3
0-40	567	67.6
0-60	783	93.3
0-90	839	100
90-180	0	0
0-180	839	100

Candela Table

Vertical Angles	Candela
0	626
5	611
15	537
25	410
35	274
45	169

Test Information

Test Number: NTS236R1
 Part Number: NSLIM-4REGLITWMPW
 Beam Spread: 63° Narrow Flood
 Lumens: 893lm
 Wattage: 12.7W
 Efficacy: 70lpw
 CCT / CRI: 3000K / 90 CRI
 Spacing Criteria (0°-180°): 0.92
 Spacing Criteria (90°-270°): 0.92



Illuminance at a Distance

Distance from Luminaire	FC at Nadir	Beam Diameter
4'	41.9fc	5'
6'	18.6fc	7-6"
8'	10.5fc	10'
10'	6.7fc	12-6"
12'	4.7fc	15'

Zonal Lumen Summary

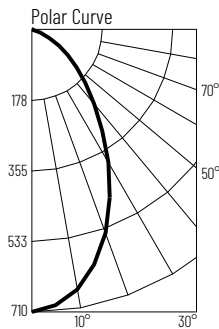
Zone	Lumens	% Luminaire
0-30	363	40.7
0-40	537	60.2
0-60	823	92.2
0-90	893	100
90-180	0	0
0-180	893	100

Candela Table

Vertical Angles	Candela
0	670
5	654
15	574
25	438
35	292
45	179

Test Information

Test Number: NTS237R1
 Part Number: NSLIM-4REGLITWMPW
 Beam Spread: 64° Narrow Flood
 Lumens: 947lm
 Wattage: 12.65W
 Efficacy: 75lpw
 CCT / CRI: 3500K / 90 CRI
 Spacing Criteria (0°-180°): 0.92
 Spacing Criteria (90°-270°): 0.92



Illuminance at a Distance

Distance from Luminaire	FC at Nadir	Beam Diameter
4'	44.4fc	5'
6'	19.7fc	7-6"
8'	11.1fc	10'
10'	7.1fc	12-6"
12'	4.9fc	15'

Zonal Lumen Summary

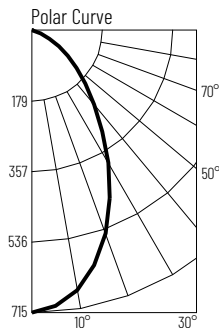
Zone	Lumens	% Luminaire
0-30	448	47.3
0-40	641	67.7
0-60	885	93.4
0-90	947	100
90-180	0	0
0-180	947	100

Candela Table

Vertical Angles	Candela
0	710
5	696
15	611
25	465
35	311
45	191

Test Information

Test Number: NTS238R1
 Part Number: NSLIM-4REGLITWMPW
 Beam Spread: 64° Narrow Flood
 Lumens: 952lm
 Wattage: 12.63W
 Efficacy: 75lpw
 CCT / CRI: 4000K / 90 CRI
 Spacing Criteria (0°-180°): 0.92
 Spacing Criteria (90°-270°): 0.92



Illuminance at a Distance

Distance from Luminaire	FC at Nadir	Beam Diameter
4'	44.7fc	5'
6'	19.9fc	7-6"
8'	11.2fc	10'
10'	7.2fc	12-6"
12'	5fc	15'

Zonal Lumen Summary

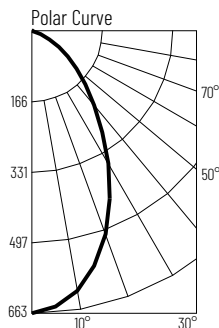
Zone	Lumens	% Luminaire
0-30	387	40.6
0-40	572	60.1
0-60	877	92.2
0-90	952	100
90-180	0	0
0-180	952	100

Candela Table

Vertical Angles	Candela
0	715
5	702
15	615
25	468
35	313
45	191

Test Information

Test Number: NTS239R1
 Part Number: NSLIM-4REGLITWMPW
 Beam Spread: 63° Narrow Flood
 Lumens: 881lm
 Wattage: 12.77W
 Efficacy: 69lpw
 CCT / CRI: 5000K / 90 CRI
 Spacing Criteria (0°-180°): 0.92
 Spacing Criteria (90°-270°): 0.92



Illuminance at a Distance

Distance from Luminaire	FC at Nadir	Beam Diameter
4'	41.4fc	5'
6'	18.4fc	7-6"
8'	10.4fc	10'
10'	6.6fc	12-6"
12'	4.6fc	15'

Zonal Lumen Summary

Zone	Lumens	% Luminaire
0-30	357	40.5
0-40	528	59.9
0-60	811	92.1
0-90	881	100
90-180	0	0
0-180	881	100

Candela Table

Vertical Angles	Candela
0	663
5	655
15	571
25	433
35	289
45	177