

Architectural Recessed Lighting



The
Koto™
MAX

2", 3", 4" & 6"

Commercial Koto™ up to 3,500 lumens

EL ELCO Lighting
Innovation Beyond Expectation



The Koto™ MAX

As new commercial structures are being designed with smaller plenum spaces between floors, The Koto™ MAX is the perfect high quality commercial grade downlight engineered to be as shallow as possible taking less space than a regular recessed housing. The module provides a lumen output up to 3,500 lumen making it the ideal lighting solution for offices, conference rooms, lobbies, retail, medical or any hospitality space. The module offers maximum flexibility, providing designers and architects with the necessary choices when laying out a room. Whether spot-lighting a specific space or lighting up an entire room the Koto MAX will meet every project's needs.



Koto™ MAX LED Module
with Pex™ 3" Round
Micro Flange

Contents

Koto™ MAX LED Modules and Housings

Introducing The Koto™ MAX	4
Koto™ MAX Frames, Power Packs & LED Module	8

Koto™ MAX Twist-On Trims

2" Koto™ Trims	10
3" Koto™ Trims	12
4" Koto™ Trims	16
6" Koto™ Trims	22

Accessories	23
-------------	----

Premium Commercial Downlight

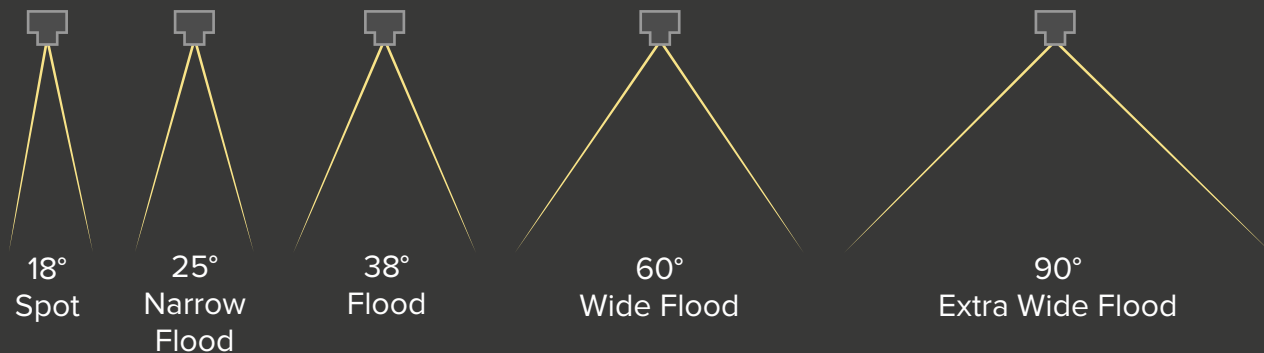
Featuring a lumen output of up to 3,500, the Koto™ MAX LED Module is designed to be installed without a recessed housing and is perfect for high-ceiling spaces in hotels, restaurants and office spaces.

CRI of over 95 in 2700K, 3000K, 3500K & 4000K.



Using industry leading technology, the Koto™ MAX LED Module comes standard with a 38° beam angle, but offers field-changeable 18°, 25°, 60° and 90° lenses to give designers and architects the options they need.

Beam Angles



The Koto™ MAX

Engineered around a 2" aperture with premium LED technology, the Koto™ MAX allows for quick beam adjustments and accommodates a wide array of secondary optics like snoots, louvers and linear lenses.



2", 3", 4" and 6" Trims All With The Same Module



The Koto™ MAX Twist-On modules can easily twist onto a plethora of trims, allowing for the same module to be used for 2", 3", 4" and 6" frames and trims

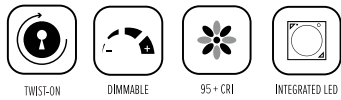


No Recessed Housing needed!
Koto™ MAX can go into a frame (pictured) or be used without one.



The Koto™ MAX LED Module

A compact and powerful LED lighting solution featuring a premium light engine. Easy to install, maintain and upgrade, making it the perfect fit for commercial projects.



MINI JBOX CONNECTION
For easy and secure module connection

MODULE
The die-cast aluminum heat sink ensures complete advanced thermal management

COB LED
CRI 95+ Technology, tightly binned for color consistency



OPTICAL LENS
Evenly distributes the light in 18°, 25°, 38°, 60° & 90° beam angles

WIDE ARRAY OF SECONDARY OPTICS
Enables in-field installations of hex louver, linear lens, spread lens, frosted diffuser, color shift, and black or white snoot



OPTIONAL
White or black snoot

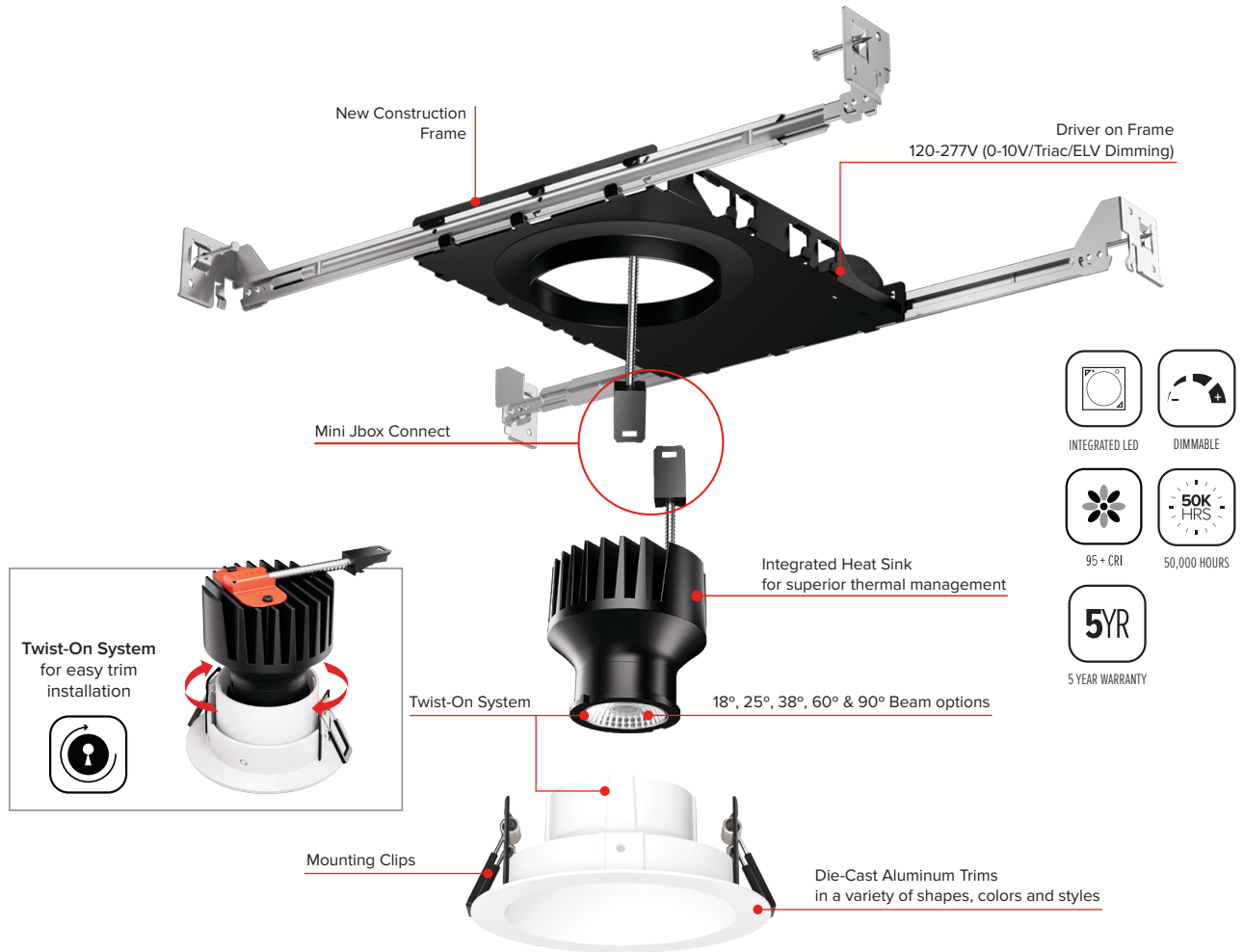
TWIST-ON EDGE
Simple connection mechanism allows for smooth installation on Koto™ trims



LENS HOLDER
Provides effortless in-field lens and secondary optics customizability

Covered by U.S. PATENTS and Patents Pending

Commercial **Koto™** MAX LED Fixture



SIZES	STYLES	FINISHES	LUMENS	COLOR TEMPERATURE
<p>2"</p>	<p>Round (Reflector, Baffle, Adjustable, Pinhole, Slot Aperture, and Wall Wash)</p>	<p>White</p>	<p>750 lm - 3500 lm</p>	<p>2700K - 4000K</p>
<p>3"</p>	<p>Square (Reflector, Adjustable, Pinhole, Slot Aperture, and Wall Wash)</p>	<p>Black</p>		
<p>4"</p>	<p>Trimless (Round and Square)</p>	<p>Bronze</p>		
<p>6"</p>		<p>Haze</p>		
		<p>Chrome</p>		

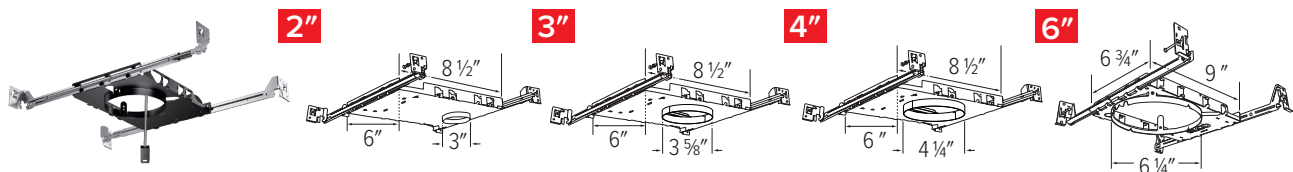
Covered by U.S. PATENTS and Patents Pending

Koto™ MAX

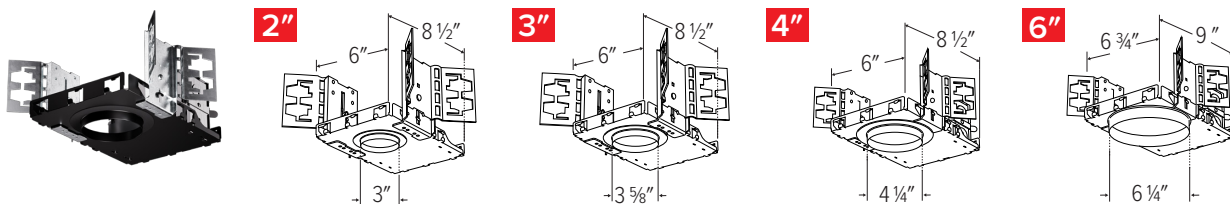
Frames, Power Packs, and LED Module



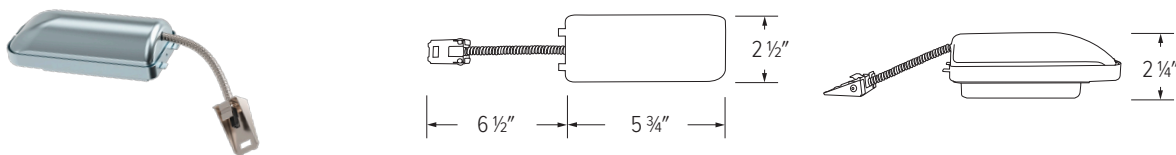
New Construction Plaster Frames (includes hanger bars)



New Construction Architectural Frames (hanger bars ordered separately)



Remodel/Retrofit Power Pack



Features

- 3 Part System: Frame, Module & Trim
- 0-10V/Triac/ELV dimmable to 1%, 120-277V
- Easy-to-remove driver on frame
- Excellent color rendering 95+ CRI
- Life span of 50,000 hours L70
- Standard 38° lens installed, with 25° and 60° lenses included with each module. Optional Lenses: 18° (EP731C), 90° (EP739C)
- Covered by U.S. PATENTS and Patents Pending

Koto™ Max Commercial Module Product Number Builder

Koto™ LED Light Engine	Color Temperature	Beam Angle
ECKT35 ¹		
	27D 2700K	(Blank) 38°, includes 25° and 60° ²
	30D 3000K	-S 18°
	35D 3500K	-N 25°
	40D 4000K	-W 60°
		-E 90°

Example: **ECKT3527D-S** [Koto™ MAX LED Light Engine, 2700K, 18° Beam Angle]

¹ ECKT35 module works with all Koto™ MAX housings & trims, for all sizes and lumen outputs.

² 38° installed on module with 25° & 60° included in the box.

New Construction Frames and Remodel/Retrofit Product Number Builder

Koto MAX	Size	Style	Lumen/Wattage	Voltage/Dimming	EM Optional
E					
	2CKT 2"	(Blank) Plaster Frame ²	07 750 lm / 6W ⁴	DX 120-277V, 0 - 10V/Triac/ELV (1%)	(Blank) No EM
	3CKT 3"	AF Architectural Frame ³	10 1000 lm / 8W ⁴		-EM 25W, 90 min battery backup
	4CKT 4"		12 1250 lm / 11W ⁴		
	6CKT 6"		15 1500 lm / 14W ⁴		
		20 2000 lm / 19W ⁵		
	CKT Remodel ¹	RM Remodel/Retrofit ¹	25 2500 lm / 23W ⁵		
			30 3000 lm / 29W ⁵		
			35 3500 lm / 32W ⁵		

Example: **E2CKTAF10DX** [2" Koto™ MAX, Architectural Frame, 1000 lm, 8W, 120/277V, 0-10V/Triac/ELV 1%]

¹ Remodel is available up to 2500 lm, works with all size trims, no frame.

² Includes Hanger Bars.

³ Hanger bars ordered separately. **FB27** - 27" Flat bars for wood construction. **CH26** - 26" C-Channel bars for T-Bar ceiling.

⁴ IC rated for direct contact with insulation, cUL up to 1500 lumens (14W).

⁵ Non IC, for use without insulation, or keep insulation 3" away from fixture. 2000 (19W) - 3500 (32W) lumens.



Select trim size to match frame size. Module works with all sizes.

2" Trims on pages 10-11

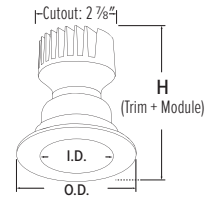
3" Trims on pages 12-15

4" Trims on pages 16-21

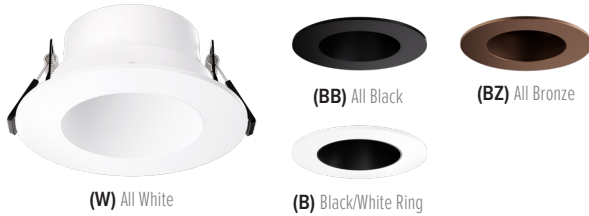
6" Trims on page 22

2" Pex™ Trims

Twist-on system for easy installation. Works with ceiling thicknesses up to 1.25"



Pex 2" Round Deep Reflector



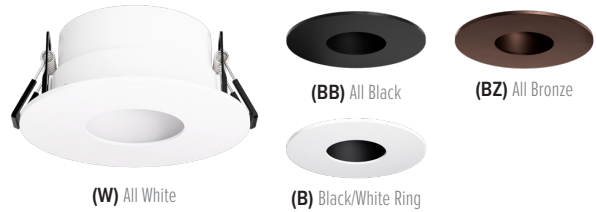
- 3 1/2" O.D. - 2 1/8" I.D. - 4 3/8" H*

EKCL2818W All White
EKCL2818BB All Black

EKCL2818B Black/White Ring
EKCL2818BZ All Bronze



Pex 2" Round Adjustable Pinhole



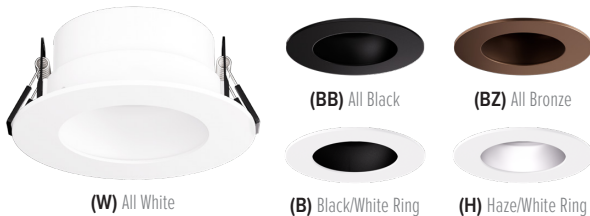
- 3 1/2" O.D. - 1 1/2" I.D. - 4 1/8" H* • 360° rotation - 30° tilt

EKCL2827W All White
EKCL2827B Black/White Ring

EKCL2827BB All Black
EKCL2827BZ All Bronze



Pex 2" Round Adjustable Reflector



- 3 1/2" O.D. - 2 3/16" I.D. - 4 1/8" H* • 360° rotation - 30° tilt

EKCL2829W All White
EKCL2829BB All Black
EKCL2829BZ All Bronze

EKCL2829B Black/White Ring
EKCL2829H Haze/White Ring



Pex 2" Round Micro Flange Reflector



- 3 1/2" O.D. - 2 1/2" I.D. - 4 3/8" H*

EKCL2863W All White
EKCL2863BB All Black



Pex 2" Round Curved Reflector



- 3 1/2" O.D. - 1 1/2" I.D. - 4" H*

EKCL2872W All White
EKCL2872B All Black



Pex 2" Round Gimbal



- 3 1/2" O.D. - 1 1/2" I.D. - 3 3/8" H*
- 30° tilt

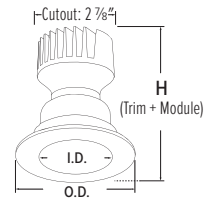
EKCL2888W All White
EKCL2888BZ All Bronze
EKCL2888B All Black



* (H) Total height including Trim + Module - (I.D.) Inside Diameter - (O.D.) Outside Diameter

2" Pex™ Trims

Twist-on system for easy installation. Works with ceiling thicknesses up to 1.25"



Pex 2" Square Deep Reflector



(W) All White

- 3 1/2" Sq. - 2 1/8" I.D. - 4 3/8" H*

EKCL2518W All White
EKCL2518BB All Black



(BB) All Black



(B) Black/White Ring

Pex 2" Square Adjustable Pinhole



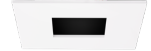
(W) All White

- 3 1/2" Sq. - 1 1/2" Sq. - 4 1/8" H* • 359° rotation - 30° tilt

EKCL2527W All White
EKCL2527BB All Black



(BB) All Black



(B) Black/White Ring

Pex 2" Square Adjustable Reflector



(W) All White

- 3 1/2" Sq. - 2 3/16" I.D. - 4 1/8" H* • 359° rotation - 30° tilt

EKCL2529W All White
EKCL2529BB All Black



(BB) All Black



(B) Black/White Ring

Pex 2" Square Reflector



(W) All White

- 3 1/2" Sq. - 1 3/8" Sq. - 4 3/8" H*

EKCL2541W All White
EKCL2541BB All Black



(BB) All Black

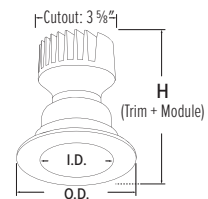


(B) Black/White Ring

* (H) Total height including Trim + Module - (I.D.) Inside Diameter - (O.D.) Outside Diameter

3" Pex™ Trims

Twist-on system for easy installation. Works with ceiling thicknesses up to 1.25"



Pex 3" Round Deep Reflector



- 4 3/8" O.D. - 3" I.D. - 5" H*

EKCL3618W All White
EKCL3618BB All Black
EKCL3618BZ All Bronze

EKCL3618B Black/White Ring
EKCL3618C Chrome/White Ring
EKCL3618H Haze/White Ring



Pex 3" Round Adjustable Gimbal



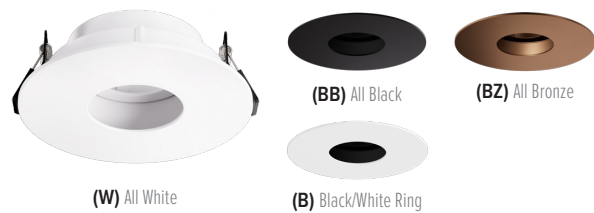
- 4 3/8" O.D. - 3" I.D. - 4 1/8" H*
- 360° rotation - 30° adjustability

EKCL3629W All White
EKCL3629BB All Black
EKCL3629BZ All Bronze

EKCL3629B Black/White Ring
EKCL3629C Chrome/White Ring
EKCL3629H Haze/White Ring



Pex 3" Round Adjustable Pinhole



- 4 3/8" O.D. - 1 3/4" I.D. - 4 1/8" H*
- 360° rotation - 30° adjustability

EKCL3627W All White
EKCL3627BB All Black

EKCL3627B Black/White Ring
EKCL3627BZ All Bronze



Pex 3" Round Directional Gimbal



- 4 3/8" O.D. - 3" I.D. - 3 7/8" H*
- 360° rotation - 25° tilt

EKCL3679W All White
EKCL3679BB All Black

EKCL3679B Black/White Ring
EKCL3679H Haze/White Ring



Pex 3" Adjustable Reflector Wall Wash



(W) All White

- 4 3/8" O.D. - 3" I.D. - 4 3/4" H*
- 45° adjustability

EKCL3622W All White



Pex 3" Round Adjustable Slot Aperture



(W) All White

- 4 3/8" O.D. - 4 1/8" H*
- 45° adjustability

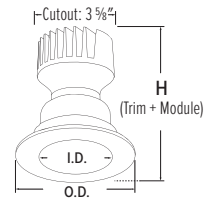
EKCL3620W Black Slot/White Ring



* **(H)** Total height including Trim + Module - **(I.D.)** Inside Diameter - **(O.D.)** Outside Diameter

3" Pex™ Trims

Twist-on system for easy installation. Works with ceiling thicknesses up to 1.25"



Pex 3" Round Micro Flange Reflector



(W) All White

- 4 3/8" O.D. - 3 3/8" I.D. - 4 5/8" H*

EKCL3663W All White
EKCL3663BB All Black



(BB) All Black

Pex 3" Round Curved Reflector



(W) All White

- 4 3/8" O.D. - 1 1/2" I.D. - 4" H*

EKCL3672W All White
EKCL3672B All Black



(B) All Black

Pex 3" Square Deep Reflector



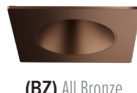
(W) All White

- 4 3/8" Sq. - 3" I.D. - 5" H*

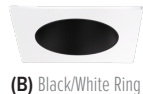
EKCL3318W All White
EKCL3318BB All Black
EKCL3318BZ All Bronze



(BB) All Black



(BZ) All Bronze



(B) Black/White Ring



(C) Chrome/White Ring



(H) Haze/White Ring

EKCL3318B Black/White Ring
EKCL3318C Chrome/White Ring
EKCL3318H Haze/White Ring

Pex 3" Square Adjustable Pinhole



(W) All White

- 4 3/8" Sq. - 2" Sq. - 4 1/8" H*

EKCL3327W All White
EKCL3327BB All Black



(BB) All Black



(B) Black/White Ring

- 360° rotation - 30° adjustability

EKCL3327B Black/White Ring
EKCL3327BZ All Bronze

Pex 3" Adjustable Reflector Wall Wash



(W) All White

- 4 3/8" Sq. - 3" I.D. - 4 3/4" H* • 45° adjustability

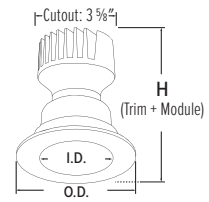
EKCL3322W All White



* (H) Total height including Trim + Module - (I.D.) Inside Diameter - (O.D.) Outside Diameter

3" Pex™ Trims

Twist-on system for easy installation. Works with ceiling thicknesses up to 1.25"



Pex 3" Square Adjustable Gimbal



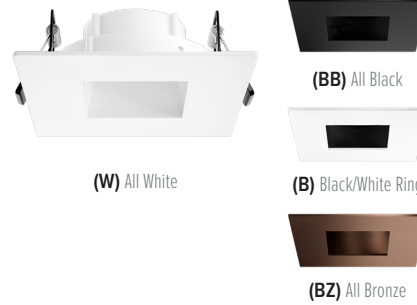
- 4 3/8" Sq. - 3" I.D. - 4" H*
- 30° adjustability, 358° rotation

EKCL3329W All White
EKCL3329BB All Black
EKCL3329BZ All Bronze

EKCL3329B Black/White Ring
EKCL3329C Chrome/White Ring
EKCL3329H Haze/White Ring



Pex 3" Square Reflector



- 4 3/8" Sq. - 2" Sq. - 4 3/8" H*

EKCL3341W All White
EKCL3341BB All Black

EKCL3341B Black/White Ring
EKCL3341BZ All Bronze



3" Pex™ Flush Mount Spackle Frame

Designed to seamlessly flush trims to ceiling. Using our well engineered flush mount trim spackle frame for easy mudding and installing one of our compatible Koto™ trims will result in a beautiful, seamless appearance.

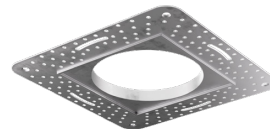
Pex 3" Round Flush Mount Spackle Frame



- Extra thin spackle frame for easy mounting
- Compatible with: EKCL3618, EKCL3629, EKCL3627, EKCL3693, EKCL3620, EKCL3622 Series only

EL3FMR

Pex 3" Square Flush Mount Spackle Frame



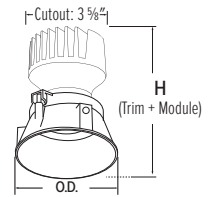
- Extra thin spackle frame for easy mounting
- Compatible with: EKCL3318, EKCL3329, EKCL3322, EKCL3327, EKCL3341 Series only

EL3FMS

* (H) Total height including Trim + Module - (I.D.) Inside Diameter - (O.D.) Outside Diameter

3" Pex™ Trimless

Designed to seamlessly eliminate trim ring, showing only the reflector and lens



A favorite in high-end residential as well as architectural spaces. Designed to seamlessly eliminate trim ring, it slides in and out of a finished ceiling without the aid of any tools. Includes a well engineered extra thin spackle frame for easy mudding and lasting quality.



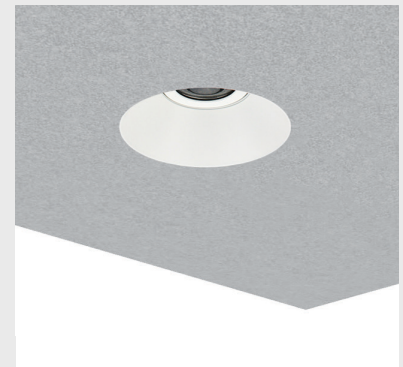
Mount Spackle Frame

Includes a well engineered extra thin spackle frame for easy mudding and lasting quality



Install Koto™ Trim

Trim slides in and out of a finished ceiling without the aid of any tools



Koto™ Trimless Design

Designed to seamlessly eliminate trim ring, showing only the reflector and lens

Pex 3" Round Trimless Reflector



(W) White

- 3" O.D. - 4 1/2" H*

ELK308W White



(B) Black

ELK308B Black



(H) Haze

ELK308H Haze

Pex 3" Round Adjustable Trimless Reflector



(W) White

- 3" O.D. - 4 1/2" H*

ELK315W White



(B) Black

ELK315B Black

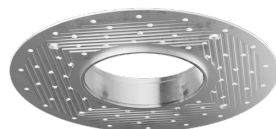


(H) Haze

ELK315H Haze

- 35° adjustability

Pex 3" Round Trimless Spackle Frame



- 7 1/8" O.D. - 3" I.D.

EL3SFR

- For use with ELK308 & ELK315

Pex 3" Knife Edge Wood Ceiling Adaptor



(W) White

- 3 7/8" O.D. - 3 1/4" I.D.

- For use with ELK308 & ELK315

EL3WCRW White



(B) Black

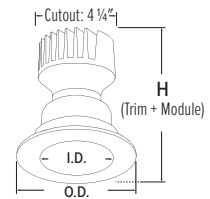
- Compatible with ceiling up to 2" thick

EL3WCRB Black

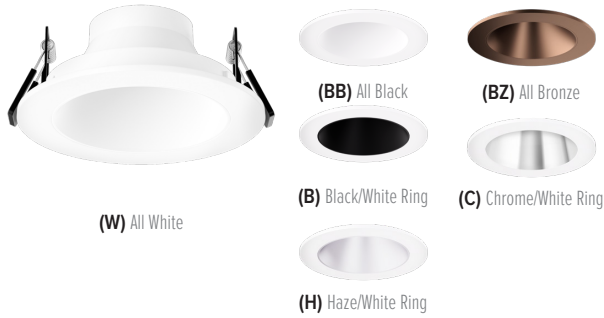
* (H) Total height including Trim + Module - (I.D.) Inside Diameter - (O.D.) Outside Diameter

4" Pex™ Trims

Twist-on system for easy installation. Works with ceiling thicknesses up to 1.25"



Pex 4" Round Deep Reflector



- 5" O.D. - 3 5/8" I.D. - 5" H*

EKCL4118W All White
EKCL4118BB All Black
EKCL4118BZ All Bronze
EKCL4118B Black/White Ring
EKCL4118C Chrome/White Ring
EKCL4118H Haze/White Ring



Pex 4" Round Adjustable Reflector



- 5" O.D. - 4" I.D. - 4 1/4" H*
- 360° rotation - 35° adjustability

EKCL4129W All White
EKCL4129BB All Black
EKCL4129BZ All Bronze
EKCL4129B Black/White Ring
EKCL4129C Chrome/White Ring
EKCL4129H Haze/White Ring



Pex 4" Round Adjustable Pinhole



- 5" O.D. - 2" I.D. - 4 1/4" H*
- 360° rotation - 35° adjustability

EKCL4127W All White
EKCL4127BB All Black
EKCL4127B Black/White Ring
EKCL4127BZ All Bronze



Pex 4" Round Micro Flange Reflector



- 5" O.D. - 3 7/8" I.D. - 4 5/8" H*

EKCL4163W All White
EKCL4163BB All Black



Pex 4" Round Adjustable Wall Wash



- 5" O.D. - 3 3/4" I.D. - 5 1/8" H*
- 45° adjustability

EKCL4122W All White



Pex 4" Round Adjustable Slot Aperture



- 5" O.D. - 5" H*
- 45° adjustability

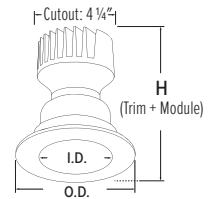
EKCL4130W Black Slot/White Ring



* (H) Total height including Trim + Module - (I.D.) Inside Diameter - (O.D.) Outside Diameter

4" Pex™ Trims

Twist-on system for easy installation. Works with ceiling thicknesses up to 1.25"



Pex 4" Adj. Reflector with Clear Glass Lens



(W) All White

- 5" O.D. - 4" I.D. - 4 3/8" H*

EKCL4111W All White
EKCL4111BB All Black

(BB) All Black

(B) Black/White Ring

- 360° rotation - 35° adjustability

EKCL4111B Black/White Ring



Pex 4" Adj. Reflector with Frosted Glass Lens



(W) All White

- 5" O.D. - 4" I.D. - 4 3/8" H*

EKCL4112W All White
EKCL4112BB All Black

(BB) All Black

(H) Haze/White Ring

(B) Black/White Ring

- 360° rotation - 35° adjustability

EKCL4112B Black/White Ring
EKCL4112H Haze/White Ring



Pex 4" Round Adj. Pinhole with Frosted Lens



(W) All White

- 5" O.D. - 2" I.D. - 4 3/8" H*

EKCL4125W All White
EKCL4125BB All Black

(BB) All Black

(BZ) All Bronze

(B) Black/White Ring

- 35° adjustability*

EKCL4125B Black/Whit Ring
EKCL4125BZ All Bronze



Pex 4" Round Shallow Reflector



(W) All White

- 5" O.D. - 3 5/8" I.D. - 4" H*

EKCL4116W All White
EKCL4116H Haze/White Ring

(H) Haze/White Ring



Pex 4" Round Curved Reflector



(W) All White

- 5" O.D. - 1 1/2" I.D. - 4" H*

EKCL4172W All White
EKCL4172B All Black

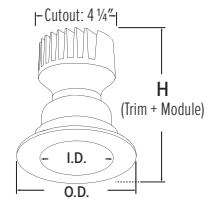
(B) All Black



* **(H)** Total height including Trim + Module - **(I.D.)** Inside Diameter - **(O.D.)** Outside Diameter

4" Pex™ Trims

Twist-on system for easy installation. Works with ceiling thicknesses up to 1.25"



Pex 4" Round Directional Gimbal



(W) All White

(BB) All Black

(H) Haze/White Ring

(B) Black/White Ring

- 5" O.D. - 3 1/2" I.D. - 3 7/8" H*
- 358° rotation - 25° tilt

EKCL4179W All White
EKCL4179BB All Black

EKCL4179B Black/White Ring
EKCL4179H Haze/White Ring



Pex 4" Round Adjustable Spot



(W) All White

(B) All Black

(BZ) All Bronze

- 5" O.D. - 3 5/8" I.D. - 3 5/8" H*

EKCL4188W All White
EKCL4188B All Black

EKCL4188BZ All Bronze



Pex 4" Square Deep Reflector



(W) All White

(BB) All Black

(BZ) All Bronze

(B) Black/White Ring

- 5" Sq. - 3 3/4" I.D. - 5" H*

EKCL4218W All White
EKCL4218BB All Black

EKCL4218B Black/White Ring
EKCL4218BZ All Bronze



Pex 4" Square Adjustable Gimbal



(W) All White

(BB) All Black

(BZ) All Bronze

(B) Black/White Ring

- 5" Sq. - 3 5/8" I.D. - 4 1/4" H*
- 35° adjustability, 358° rotation

EKCL4229W All White
EKCL4229BB All Black

EKCL4229B Black/White Ring
EKCL4229BZ All Bronze



Pex 4" Square Shallow Reflector



(W) All White

- 5" Sq. - 3 5/8" I.D. - 4" H*

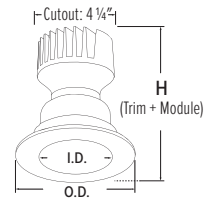
EKCL4216W All White



* (H) Total height including Trim + Module - (I.D.) Inside Diameter - (O.D.) Outside Diameter

4" Pex™ Trims

Twist-on system for easy installation. Works with ceiling thicknesses up to 1.25"



Pex 4" Square Adjustable Pinhole



- 5" Sq. - 2 1/2" Sq. - 4 1/4" H*
- 35° adjustability
- EKCL4227W** All White
- EKCL4227BB** All Black
- EKCL4227BZ** All Bronze
- EKCL4227B** Black/White Ring
- EKCL4227H** Haze/White Ring



Pex 4" Square Adj. Pinhole with Frosted Lens



- 5" Sq. - 2 1/2" Sq. - 4 3/8" H*
- 35° adjustability
- EKCL4212W** All White
- EKCL4212BB** All Black
- EKCL4212B** Black/White Ring
- EKCL4212BZ** All Bronze



4" Flexa™ Trims

Flexa 4" Square Reflector



- 4 3/4" Sq. - 2 3/8" Sq. - 4 1/2" H*
- EKCL4741WW** All White
- EKCL4741BB** All Black
- EKCL4741BW** Black/White Ring



Flexa 4" Square Adj. Reflector



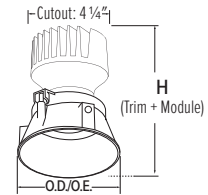
- 4 3/4" Sq. - 2 3/8" Sq. - 4 3/8" H*
- 35° tilt Adjustability, 358° rotation
- EKCL4759WW** All White
- EKCL4759BB** All Black
- EKCL4759B** Black/White Ring
- EKCL4759H** Haze/White Ring



* (H) Total height including Trim + Module - (I.D.) Inside Diameter - (O.D.) Outside Diameter

4" Pex™ Trimless

Designed to seamlessly make the trim ring invisible showing only the reflector and lens



Pex 4" Round Trimless Reflector



(W) White



(H) Haze

(H) Haze

(BZ) Bronze

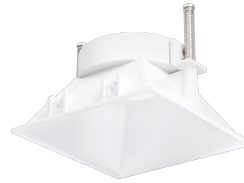
- 4" O.D. - 1 1/2" I.D. - 4 1/2" H* • Requires EL4SFR (Sold separately)

ELK408W White
ELK408B Black

ELK408BZ Bronze
ELK408H Haze



Pex 4" Square Trimless Reflector



(W) White



(B) Black

- 3 1/4" Sq. - 4 1/2" H*

ELK445W White
ELK445B Black

- Requires EL4SFS (Sold separately)



Pex 4" Round Adj. Trimless Reflector



(W) White



(H) Haze

(H) Haze

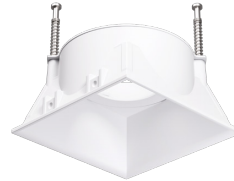
- 4" O.D. - 1 1/2" I.D. - 4 1/2" H* • 35° Adjustability
- Requires EL4SFR (Sold separately)

ELK415W White
ELK415B Black

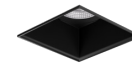
ELK415H Haze



Pex 4" Square Adj. Trimless Reflector



(W) White



(B) Black



(H) Haze

- 3 1/4" Sq. - 4 1/2" H*
- 35° adjustability

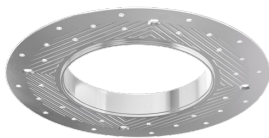
ELK459W White
ELK459B Black

- Requires EL4SFS (Sold separately)

ELK459H Haze



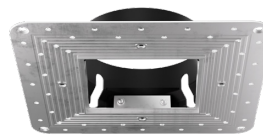
Pex 4" Round Trimless Spackle Frame



- 7 1/8" O.D. - 4" I.D.
- For use with ELK408 & ELK415

EL4SFR

Pex 4" Square Trimless Spackle Frame



- 6 3/4" Sq. - 3 3/8" Sq.
- For use with ELK445 & ELK459

EL4SFS

* (H) Total height including Trim + Module - (I.D.) Inside Diameter - (O.D.) Outside Diameter

4" Pex™ Flush Mount Spackle Frame

Designed to seamlessly flush standard Koto™ trim rings to the ceiling



Install Koto™ Trim
Trim slides in and out of a finished ceiling without the aid of any tools

Koto™ Flush Mount Spackle Frame



Flush Mount Spackle Frame
Well engineered flush mount spackle frame or easy mudding



Flush Mount Trim Design
Designed to flush the trim ring to the ceiling

Pex 4" Round Flush Mount Spackle Frame



- Extra thin spackle frame for easy mounting
- Compatible with: EKCL4116, EKCL4118, EKCL4127, EKCL4129, EKCL4710, EKCL4713, EKCL4715 Series only

EL4FMR

Pex 4" Square Flush Mount Spackle Frame

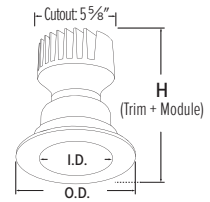


- Extra thin spackle frame for easy mounting
- Compatible with: EKCL4216, EKCL4218, EKCL4227, EKCL4229 Series only

EL4FMS

6" Pex™ Trims

Twist-on system for easy installation. Works with ceiling thicknesses up to 1.25"



Pex 6" Round Reflector



(W) All White

- 7 1/2" O.D. - 6" I.D. - 5 1/2" H*

EKCL6418W All White
EKCL6418BB All Black



Pex 6" Round Adjustable Reflector



(W) All White

- 7 1/2" O.D. - 6" I.D. - 5 1/8" H*

EKCL6429W All White
EKCL6429BB All Black
EKCL6429BZ All Bronze

Pex 6" Round Adj. Pinhole with Reflector



(W) All White

- 8" O.D. - 1 3/4" I.D. - 5 1/8" H*
- 35° Adjustability

EKCL6427W All White
EKCL6427B Black/White Ring

Pex 6" Square Adjustable Reflector



(W) All White

- 7 1/2" Sq. - 6" Sq. - 5" H*

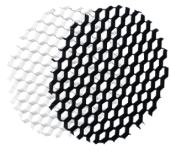
EKCL6829W All White
EKCL6829BB All Black
EKCL6829H Haze/White Ring

* (H) Total height including Trim + Module - (I.D.) Inside Diameter - (O.D.) Outside Diameter

Accessories



Secondary Optics



Field Changeable
Hex Louver
L45 Black
L57 White

For a better glare shield



Field Changeable
Linear Lens
L46

For a wide rectangular illumination pattern



Field Changeable
Spread Lens
L47

For a symmetrical broadening of light beams



Field Changeable
Frosted Diffuser
L49

For a softer light



Field Changeable
Color Shifters
L51 Color temperature reducer
L52 Blue
L53 Pink



Field Changeable
Snoots
L50W White
L50B Black

Reduces glare and light spill

Secondary Optics



Field Changeable
Single Asymmetric Lens
L54



Field Changeable
Double Asymmetric Lens
L55

Lens



EP731C-EP734C
Field Changeable
Lens

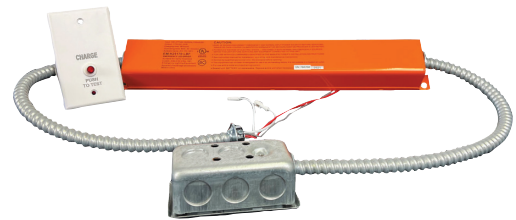
EP731C (18°)
EP732C (25°)*
EP733C (38°)*
EP734C (60°)*
EP739C (90°)

*25°, 38°, & 60° lens included with Koto™ MAX LED Module



EP739C

Emergency Battery Backup

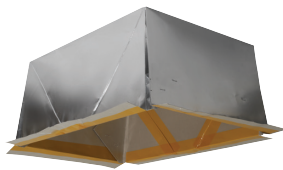


Emergency Battery Backup

KEM-ERT

90 minute of emergency operation. Charging time: 36 hours. UL listed for damp locations. Input: 6W, 100-277VAC, 50-60Hz. Output: 25W, 170VDC.

Fire Rated Covers



Fire Enclosure for Recessed Fixtures

FIREENCL Standard - 9" H x 20 3/8" L x 14 3/8" W
FIREENCL-S Shallow - 7 1/4" H x 16" L x 14 3/8" W

Provides fire barrier around recessed lights. ETL approved 1-Hour fire rating. Meets UL 263, ASTM E119 Specifications. To be used with Mica Tape (FIRETAPE sold separately) to seal the power feeding point.



Mica Fire Tape (for Fire Enclosure)

FIRETAPE 3/4" H x 16 ft. L

Fire proof mica adhesive tape helps seal the power feeding point on Fire Enclosure. Offers outstanding high temperature and flame resistance, and provides excellent electrical insulation.

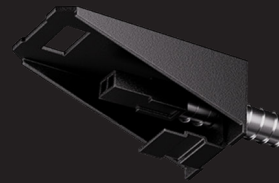


Fire Cover for Recessed Fixtures

FIRECVR 9 3/4" H x 17" O.D. x 13" I.D.

Made of heat activated intumescent material. UL approved for most ceiling types: sheetrock drywall, gypsum & acoustical tiles. UL Rated enclosure stops flame spread and heat transmission for up to 2 hours.

ELCAT1071



EL ELCO Lighting

Corporate Headquarters

2042 E. Vernon Ave.
Vernon, CA 90058
Tel: 323.231.2600
Fax: 323.231.3200
elcolighting.com

Customer Service

Tel: 800.522.2626
Fax: 800.644.2626
orderdesk@elcolighting.com
customerservice@elcolighting.com
sales@elcolighting.com

Printed in the U.S.A.
\$15.00

RV 01/25

© ELCO Lighting. The marks appearing in this catalog are registered trademarks of ELCO Lighting. Other marks used herein are recognized trademarks of their respective companies. Products shown in this brochure may be covered by U.S. and international patents. Specifications subject to change without notice.

