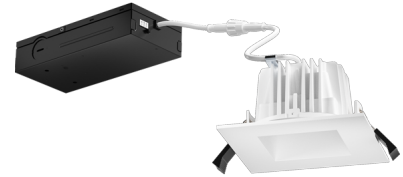


4" LED High Lumen Square Reflector Insert with 5-CCT Switch & 5-Lumen Switch

Our 4" LED Recessed Downlights are designed for quick and easy installation without a housing for both new construction and remodel applications, gives you the options you are looking for in one fixture. The CCT manual switch allows you to choose between 2700K, 3000K, 3500K, 4000K or 5000K. The Lumen Switch allows you to choose between 1000 (10W), 1400 (14W), 1800 (18W). IC-Rated for use with direct contact with insulation.



Features

- IC Airtight for use with direct contact to insulation.
- Designed to fit in plenums as shallow as 3".
- Eliminates the need for housing.
- Lumens (Wattage): 1000 lm (10W), 1400 lm (14W), 1800 lm (18W)
- New Construction application requires mounting plate or frame.
- Remodel applications require no additional accessories.
- 90+ CRI for extremely accurate color rendering.
- Wet Location allows for use indoors or outdoors.
- Energy Star Certified, Title 24 JA8-2022-E Compliant
- Includes driver and Jbox.

Specifications

| | |
|---------------------|-----------------------------------|
| Wattage | 10W, 14W, 18WW |
| Lumens | 1000, 1400, 1800 lm |
| Voltage | 120/277V |
| Color Temp. | 2700K, 3000K, 3500K, 4000K, 5000K |
| Dimmable | 0-10V/Triac/ELV |
| Lamp Type | LED |
| CRI | 90+ |
| Wet Location | Listed |

Options



White



Black

Technical Details

Optics: Polycarbonate lens diffuses light evenly throughout space with no LED pixelation. 80° Standard beam angle.

Construction: IC rated driver and fixture are tested and approved for direct contact with insulation. Plenum rated cable connector to connect from module to remote driver box. solated driver integrated inside aluminum remote box with two knockouts with slots for pryout.

Installation: Designed for super shallow ceiling plenums without any housing. High strength steel spring clip for easy installation. Hole cut out template provided for accurate hole size for proper trim installation. Maximum hole size should not exceed 4 1/4" for this product. Suitable installation for t-grid and drop ceiling applications.

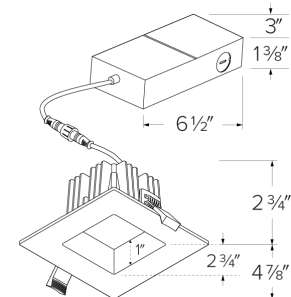
Electrical: Driver connects to 120-277V power supply. High Efficiency driver with a power factor > 0.9. Start time of less than .75 seconds.

Dimmability: Works with 120V Triac/ELV type dimmers. Or 120/277V with 0-10V dimminability on 120/277V and Triac/ELV on 120V side. Dims down to 10%. For full list of dimmers, refer to the Dimmer Compatability List.

Listings: ETL Listed for Wet Locations. IC-Rated for direct contact with insulation. Energy Star Compliant. Title 24 JA8-2022-E Compliant.

Warranty: 5-year limited warranty.

Dimensions



Product Numbers

| Item | Lamp type | Lumens | CCT | Watts | Voltage | Dimming | Finish |
|-------------|-----------|---------|--------|-------|----------|-----------------|-----------|
| ERT487CT5W | LED | 1000, | 2700K, | 10W, | 120/277V | 0-10V/Triac/ELV | All White |
| | | 1400, | 3000K, | 14W, | | | |
| | | 1800 lm | 3500K, | 18W | | | |
| ERT487CT5BB | LED | 1000, | 2700K, | 10W, | 120/277V | 0-10V/Triac/ELV | All Black |
| | | 1400, | 3000K, | 14W, | | | |
| | | 1800 lm | 3500K, | 18W | | | |

Product Number Builder Example: **ERT487CT5W**

4" LED Square Reflector with CCT/Lumen Switch

Color Temp.

Finish

ERT487

CT5 2700K-5000K

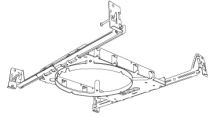
W White
B Black

Compatible Products

For use with 4" Elm™ System Slim Panels

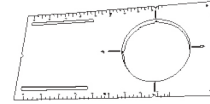


4" Elm™ New Construction Frames



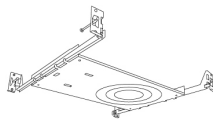
Frame with Hanger Bars
New Construction

| CAT NO. | SPECIFICATIONS |
|------------------|----------------------------------|
| E4LF1 (4" Round) | 8 1/2" L x 6" W x 4 1/4" Opening |



Round Mounting Plate
New Construction

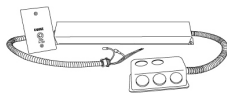
| CAT NO. | SPECIFICATIONS |
|-----------------|---------------------------------------|
| EMP4 (4" Round) | 13 1/4" L x 6 1/4" W x 4 3/8" Opening |



Universal Frame for 2", 4" and 6" Downlights
New Construction

| CAT NO. | SPECIFICATIONS |
|---------|----------------------|
| E246LF1 | 12 1/8" L x 7 5/8" W |

4" Accessories



Emergency Battery Backup

| CAT NO. | SPECIFICATIONS |
|---------|----------------|
| KEM-ERT | 25W, 120/277V |



ELCO Lighting

Dimmer Compatibility Chart

Elm™ System LED Downlights

For ERT434CT5, ERT487CT5 Series

For Reference Only

Testing conducted by ELCO Lighting is not a substitute for and does not imply certification by an independent laboratory or any other standards certification. Refer to manufacturer specifications for more detailed information on product certifications and standards. Consult the dimmer manufacturer prior to installation to ensure compatibility.

| Manufacturer | Product | Part Number | Dimmed Light Output Range |
|--|--|-------------|---------------------------|
| For Triac/ELV Dimmers (For ERT434CT5 & ERT487CT5) | | | |
| Lutron | Maestro, 120V, 50/60Hz, 150W LED/CFL, Single Pole, 3-Way | MACL-153M | 5% - 100% |
| | Diva® Series 150W Single Pole/3-Way Dimmer | DVCL-153P | 1% - 100% |
| | Skylark Contour, 120V AC, 60Hz, 150W LED/CFL, Single Pole, 3-Way | CTCL-153P | 1% - 100% |
| | Skylark, 120V AC 60Hz, 150W LED/CFL, Single Pole, 3-Way | SCL-153P | 1% - 100% |
| | Caséta® Wireless Dimmer | PD-6WCL | 5% - 100% |
| | Ariadni®/Toggler® Series 150W Single Pole/3-Way Dimmer | TGCL-153P | 10% - 100% |
| Leviton | Decora SureSlide® Single Pole with Slide-to-Off | 6672 | 10% - 100% |
| For 0-10V Dimmers (For EL487CT5 Only) | | | |
| Lutron | Diva®, 120/277V, 0-10V, Single Pole, 3-Way | DVSTV | 5% - 100% |
| Leviton | Decora Illumatech®, 120/277V, 0-10V, Fluorescent/LED Load Type, Single Pole, 3-Way | IP710 | 5% - 100% |

***NOTE: Refer to dimmer manufacturer’s documentation for installation instructions and circuit details**

Disclaimer: Minimum and maximum loads for LEDs and CFLs are given in number of lamps and may vary depending on the lamp being used. Testing conducted by ELCO Lighting is not a substitute for and does not imply certification by an independent laboratory or any other standards certification. Refer to manufacturer specifications for more detailed information on product certifications and standards.

Integrating our lighting with your Smart Home System is a breeze. Simply check your Smart Home system for compatible smart switches and cross reference that with our Dimming Compatibility Chart. Once the switches are integrated with your Smart Home system your lights will be ready to go.



2042 E. Vernon Ave. Vernon CA 90058 Tel 323.231.2600 Fax 323.231.3200 elcolighting.com