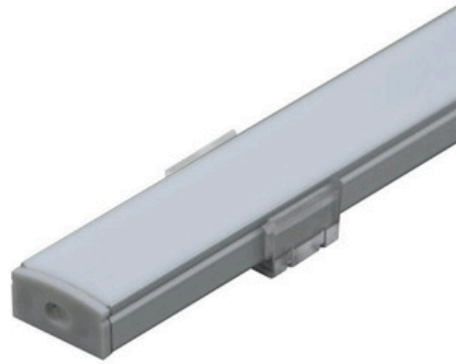
	Job Name:	Catalog Number: CAF-102	Type:
		Notes:	

LED Slim Surface Aluminum Channel



DESCRIPTION

LED Slim Surface Aluminum Channel includes our aircraft grade aluminum channel and compatible frosted lens. Creating a rigid, modern, and sleek style LED strip light installation has never been easier.

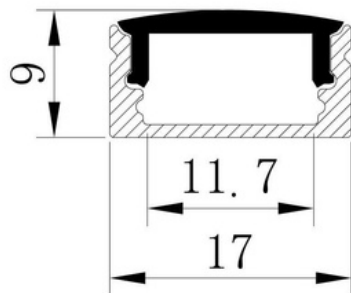
KEY FEATURES

- It comes in 2-meter sections and can be custom cut to any length.
- 17.02 mm wide by 8.89 mm height.
- Perfect for mounting LED Strip Light up to 10 mm in width.
- Rigid and dustproof housing can be recessed or surface mounted.
- Includes aluminum channel, diffuser, 2 mounting clips, and 2 end caps.

The Channel lens protects LED strip light from the environment and creates diffused lighting effects. Easy to install, simply clip the diffuser lens into the channel.

SPECIFICATIONS

Channel Height: 0.35 in / 8.89 mm thick
Inside Width: 0.46 in / 11.7 mm wide
Outside Width: 0.67 in / 17.02 mm wide
Length: 78.74 in (2 m) Long
LED Strip Width: up to 10 mm
Lens Finish: Frosted or Opal White
Environment: Indoor Use, Dry Locations
Finish: Aluminum



Unit: mm

APPLICATIONS

- For use with LED Strip lights up to 10 mm in width.

