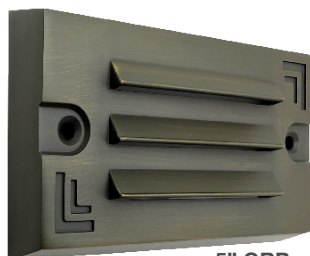




Low Voltage: Louver Surface Mount Step Light

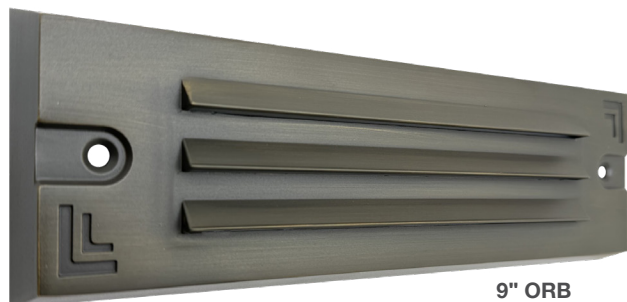
Solid Brass – Architectural Models



5" ORB



5" MBL



9" ORB



9" MBL

Detail Specifications:

- 5-CCT: 27/30/35/40/50K
- Finish: Bronze, Black
- Housing: Aluminum
- IP Rating: Wet Location IP65
- Beam Angle: 60°
- Chip: SMD 2835, R9 >50, CRI >80'
- Power: 4W
- Lumens: 60
- Non-dimmable
- Operating Temperature: -4° - 114° F
- Direction: Horizontal

Applications:

- Landscape
- Walkways & Pathways
- Security Lighting
- Hospitality, Multi-Family
- Outdoor Corridors
- General Outdoor Lighting
- Residential, Commercial

Product Information:

- Sturdy di-cast aluminum housing finished with corrosion free powder coat
- Sleek low profile design
- Available in 5" or 9" width
- Protected against high pressure water
- Built-in LED design
- Packaging: Retail color box
- Master box quantity: 30pcs.

Driver Options:

- 9-17V
- Low voltage transformer required
- Non Dimmable
- PF >0.9, 50/60Hz

Mounting & Installations:

- Wire: 6' (72") SPT-1W 20 gauge wire lead
- Surface Mount
- No j-box required

Certifications:

- ETL Listed for USA and CA
- 5 Year Limited Warranty
- FCC CFR 47, GCC Part 15, Subpart B:2017

Series

- LED-STEP-LVR-SM-5-3W-5CCT-BR-ORB-LV**
5" Width • 60 Lumens • Oil Rubbed Bronze
- LED-STEP-LVR-SM-5-3W-5CCT-BR-MBL-LV**
5" Width • 60 Lumens • Matte Black
- LED-STEP-LVR-SM-9-5W-5CCT-BR-ORB-LV**
9" Width • 100 Lumens • Oil Rubbed Bronze
- LED-STEP-LVR-SM-9-5W-5CCT-BR-MBL-LV**
9" Width • 100 Lumens • Matte Black

Specs and model numbers are subject to change with or without notice. Customization of product is available.

FEATURES



DIMENSIONS

