

# NUTPI Series

## 24V Standard Silicone Encapsulated LED Tape Light

Source: 1.5W/ft. LED  
70lm/ft.

Type
Project
Catalog No.
Notes

### PRODUCT DESCRIPTION

LED Tape Light is a perfect solution for your LED linear lighting needs. This energy efficient and very low profile LED Tape is great for use in cove lighting, architectural enhancements, under cabinet or many more discreet locations. This flexible LED light source is a durable silicone encapsulated tape, cULus Listed for Damp Location applications. Available in a roll, kit, or sections. Each roll or kit comes with (16) 12" sections linked together.

### FEATURES

- Available in 16' kit, 16' roll, 12" section, and 4" section
- 70 lumens per foot
- Separable every 12", easily disconnected and connected without soldering
- Field cuttable every 4" or 6 LEDs
- Easy to install; pre-applied 3M™ tape or 15 acrylic mounting clips (included with roll/kit)
- 7 available colors: Blue, Green, Red, Yellow, Cool White (4200K), Warm White (3000K) or Warm White (2700K)
- No soldering or additional wiring is required

### INCLUDED WITH EVERY 16' ROLL

(1) 16' Tape Light Roll with 12" separable sections, (15) Acrylic Mounting Clips with screws [NATL-401], and (1) 9" Power Line Interconnector [NATL-509].

### INCLUDED WITH EVERY 16' KIT

(1) 16' Tape Light Roll, (15) Acrylic Mounting Clips with screws [NATL-401], (1) 9" Power Line Interconnector [NATL-509], (5) Shrink Wrap Tubes [NATL-400] and (1) 24V Plug-In Driver [NATL-524].

### SPECIFICATION

**Construction:** The silicone encapsulated tape can be cut every 4" or 6 LEDs at marked intervals. Cutting does not effect circuit (shrink wrap tube included for concealment). LED Tape Light is also separable every 12", each connection has pre-installed shrink wrap around power connections to ensure listing. Simply slice the clear shrink wrap at each electrical connection, and separate pieces. This eliminates soldering when using partial rolls. Each roll or kit comes with 9" power line connector [NATL-509].

**Mounting:** Each Tape Light includes pre-applied 3M™ adhesive tape for simple installation. Optional channels and clear acrylic clips are available.

### ELECTRICAL

**Input Voltage:** 24V

**Light Source:** 18 LEDs per foot

**Lumens / Wattage:** 70lm / 1.5W per foot

**Color Temperature:** Blue, Green, Red, Yellow, 2700K, 3000K or 4200K

**Color Rendering Index:** 90 CRI

**Life Expectancy:** 50,000 hours

**Dimming:** Dimmable with Dimmable LED Driver

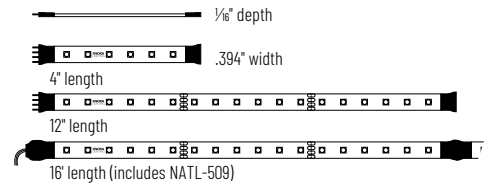
**Maximum Run Length:** 64'

### LABELS AND LISTINGS

- cULus Listed for Damp Locations
- 3-Year Limited Warranty



### PRODUCT IMAGES & DIMENSIONS



## 24V Standard Silicone Encapsulated LED Tape Light

Length / Finish	CCT / CRI	Section Length
<b>NUTPI-W16LED</b> = 16' Roll / White finish	<b>927</b> = 2700K / 90 CRI	<b>(blank)</b> = 16' Roll
<b>NUTPI-WLED</b> = Section / White finish	<b>930</b> = 3000K / 90 CRI	<b>/4</b> = 4" Section
	<b>942</b> = 4200K / 90 CRI	<b>/12</b> = 12" Section
	<b>B</b> = Blue	
	<b>R</b> = Red	
	<b>Y</b> = Yellow (Amber)	
<b>NUTPI-W16LED</b> = 16' Kit	<b>927K</b> = 2700K / 90 CRI	<b>(blank)</b> = 16' Kit
	<b>930K</b> = 3000K / 90 CRI	
	<b>942K</b> = 4200K / 90 CRI	

Example: **NUTPI-WLED/12** = 12" 24V Standard LED Tape Light, Blue LED

# NUTPI Series

## 24V Standard Silicone Encapsulated LED Tape Light Accessories

Type

Project

Catalog No.

Notes



\*Y\* Splitter Cable

**NATL-300W**

Allows splitting the Tape Light from a run or driver, into two separate runs.



X-Splitter Cable

**NATL-301W**

Allows splitting the Tape Light from a run or driver, into three separate runs.



Interconnection Cable

**NATL-202W** 2" Cable  
**NATL-206W** 6" Cable  
**NATL-218W** 18" Cable  
**NATL-236W** 36" Cable  
**NATL-272W** 72" Cable

Allows easy linking of two Tape Light sections. Cables are flexible and can be moved in any direction, or be joined together for custom lengths.



Power Line Interconnector

**NATL-509W** 9" Cable

Connects any Tape Light run to a driver. (1) Power line interconnector is included with every Tape Light roll/kit.



Power Line Interconnector with On/Off Switch

**NATL-511W** 11" Cable  
 Allows individual switching on any Tape Light run, and connect LED Tape Light run directly to LED Driver.



Shrink Wrap Tube

**NATL-400** Pack of 5  
 Seals connection made in the field. Necessary to maintain cULus listing. Two shrink wrap tubes are included with every Tape Light roll and section.



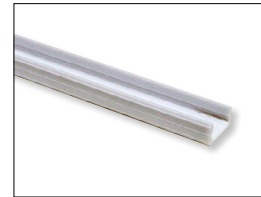
End Cap

**NATL-403** Black  
**NATL-403W** White  
 Covers open end of Tape Light.



Clear Acrylic Mounting Clips

**NATL-401** Pack of 15  
 Use in conjunction with adhesive backing to attach Tape Light to a surface. Pack of 15 clear acrylic mounting clips are included with every Tape Light roll.



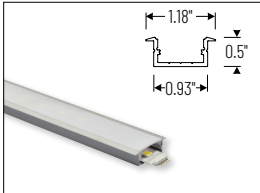
4' Plastic Channel

**NATL-420B** Black  
**NATL-420W** White  
 Mounts Tape Light to various surfaces. Tape Light snaps into the channel. Field cuttable.



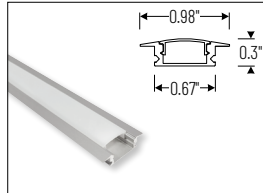
Mounting Clips for Channels

**NATL-CMC** Pack of 15  
 Mounting clips for NATL-C23, NATL-C24 and NATL-C27. Pack includes 15 mounting clips.



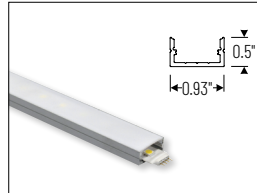
4' Shallow Recessed Channel

**NATL-C23A** Aluminum  
 Used to mount tape light recessed in a surface. Plastic diffuser and end caps included. Field cuttable.



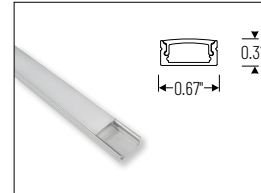
4' Shallow Recessed Channel

**NATL2-C23A** Aluminum  
 Used to mount tape light recessed in a surface. Diffused lens, end caps and mounting hardware are included. Field cuttable.



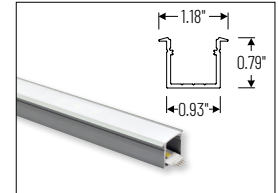
4' Shallow Channels

**NATL-C24A** Aluminum  
**NATL-C24B** Black  
**NATL-C24W** White  
 Used to mount tape light to various surfaces. Plastic diffuser and end caps included. Field cuttable.



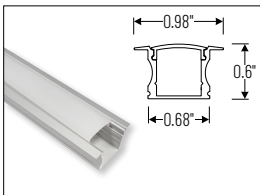
4' Shallow Channel

**NATL2-C24A** Aluminum  
 Used to mount tape light to various surfaces. Diffused lens, end caps and mounting hardware are included. Field cuttable.



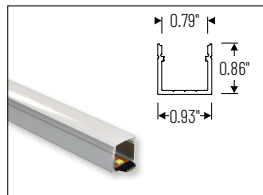
4' Deep Recessed Channel

**NATL-C25A** Aluminum  
 Used to mount tape light recessed in a surface. Plastic diffuser and end caps included. Field cuttable.



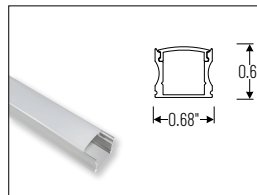
4' Deep Recessed Channel

**NATL2-C25A** Aluminum  
 Used to mount tape light recessed in a surface. Diffused lens, end caps and mounting hardware are included. Field cuttable.



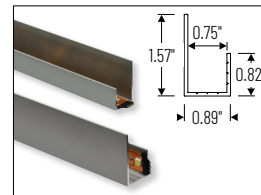
4' Deep Channels

**NATL-C26A** Aluminum  
**NATL-C26W** White  
 Used to mount tape light to various surfaces. Plastic diffuser and end caps included. Field cuttable.



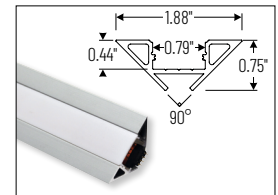
4' Deep Channel

**NATL2-C26A** Aluminum  
 Used to mount tape light to various surfaces. Diffused lens, end caps and mounting hardware are included. Field cuttable.



4' J-Style Channel

**NATL-C27A** Aluminum  
 Used to mount tape light to various surfaces. Field cuttable.



4' Corner Channels

**NATL-C28A** Aluminum  
**NATL-C28B** Black  
**NATL-C28W** White  
 Plastic diffuser and End caps included. Field cuttable.

# NUTPI Series

## 24V Standard Silicone Encapsulated LED Tape Light Drivers & Accessories

Type

Project

Catalog No.

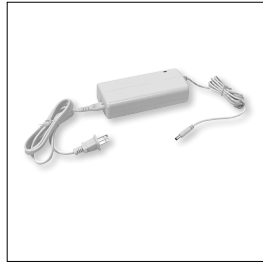
Notes



Direct Plug-In LED Driver

**NATL-524W** 24V 24W  
**NATL-545W** 24V 45W

Input Voltage: 120V  
Cable Length: 6'



Direct Plug-In LED Driver

**NATL-596W** 24V 96W

Input Voltage: 120V  
Input Wire: 44" Cord and Plug  
Output Wire: 58" Power line connector



Class II Hardwire LED Driver

**NATL-5100HW** 24V 81.6W

Input Voltage: 120-240V  
Dimming: Non-Dimmable  
Includes: 10' Power Line Connector



Class II Universal Dimming Driver

**NPSU-60W/24** 60W  
**NPSU-96W/24** 96W  
**NPSU-3X96W/24** 3x 96W

Input Voltage: 110-277V  
Dimming: Triac, ELV, MLV, 0-10V, PWM  
Note: Power Line Connector(s) not included



Class II Hardwire LED Driver  
ELV Dimming

**NATLED-5040HW** 24V 40W  
**NATLED-5075HW** 24V 75W

Input Voltage: 120V  
Dimming: ELV  
Includes: 10' Power Line Connector



Class II Hardwire LED Driver  
MLV Dimming

**NMT-48/24C2D1** 48W

Input Voltage: 120V  
Dimming: Magnetic Low Voltage  
Includes: 10' Power Line Connector



Class II Hardwire LED Driver  
with Breakers, MLV Dimming

**NMT-303/24C2D1** 120V input  
**NMT-303/24C2D2** 277V input

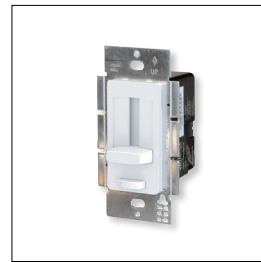
Input Voltage: 120V or 277V  
Dimming: Magnetic Low Voltage  
Breakers: (3) 100W  
Note: Power Line Connector(s) not included



Class II Hardwire LED Driver  
with Regulator, MLV Dimming

**NMTD-60/24D** 24V 60W  
**NMTD-96/24D** 24V 96W

Input Voltage: 120-277V  
Dimming: Magnetic Low Voltage  
Regulator: Integral regulator for constant current and voltage  
Includes: 10' Power Line Connector



NEXUS® All-in-One LED Driver and  
Dimmer

**NATL-SWEX60/24A** 24V 60W  
**NATL-SWEX100/24A** 24V 100W

Input Voltage: 120V  
Dimming: Integral Dimmer  
Description: Eliminates the driver and allows 120V input and 24V output from a single gang box. 100-5% dimming and on/off switch.



Power Line Connector

**NATL-10** 10' Power Line  
**NATL-30** 30' Power Line

For use with Class II drivers. Carries output from driver, requires power line interconnectors.

**NATL-302W** 5" Splitter

Splits power line connector into two separate leads, requires power line cable.



Touch Dimmer with Memory

**NATL-518W**

72W max., no power fail memory, touch on/off and hold to dim.



Low Voltage Splice Box

**NATL-415W**

Use to join low voltage lead to power line connector.



Terminal Block

**NATL-407** 4-Way  
2-3/8"L x 1-1/8"W x 7/16"D

**NATL-408** 8-Way  
4"L x 1-1/8"W x 7/16"D



Wire Clip, Plastic - 10pk

**NATL-404W** J-Clip  
**NATL-405W** Over the Wire  
**NATL-406W** Square Clip



2' Wire Raceway

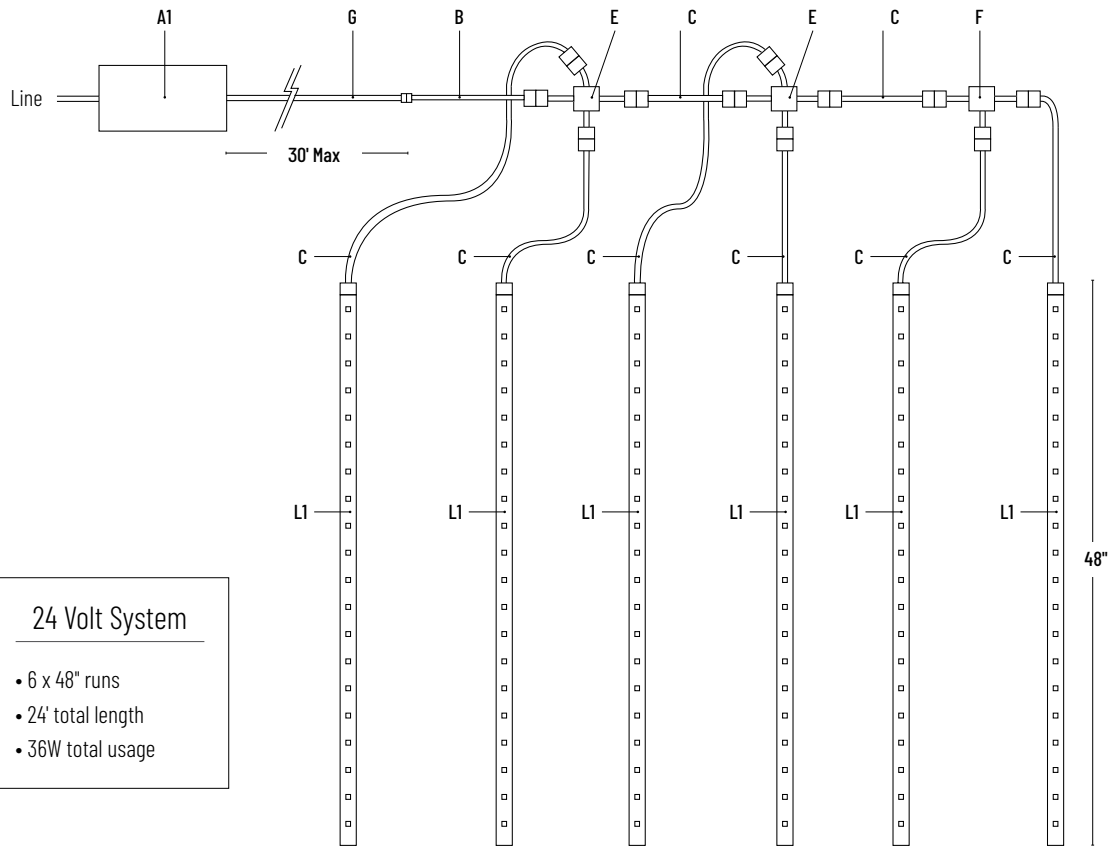
**NATL-422B** Black  
**NATL-422W** White

Field-cutable plastic. Includes wire channel with double faced tape and cover.

# NUTP1 Series

## 24V Standard Silicone Encapsulated LED Tape Light - Sample Layout

Type \_\_\_\_\_  
 Project \_\_\_\_\_  
 Catalog No. \_\_\_\_\_  
 Notes \_\_\_\_\_



**24 Volt System**

- 6 x 48" runs
- 24' total length
- 36W total usage

	DESCRIPTION	ITEM #
<b>A1</b>	24V 60W Dimmable Class II Hardwire LED Driver	NMTD-60/240
<b>B</b>	24V 9" Power Line Interconnector (one included with each Tape Light roll)	NATL-509
<b>C</b>	2" Interconnection Cable 6" Interconnection Cable 18" Interconnection Cable 36" Interconnection Cable 72" Interconnection Cable	NATL-202 NATL-206 NATL-218 NATL-236 NATL-272
<b>E</b>	"X" Splitter Cable (1 in & 3 out)	NATL-301
<b>F</b>	"Y" Splitter Cable (1 in & 2 out)	NATL-300
<b>G</b>	10' Power Line Connector (one included with Class II drivers) 30' Power Line Connector	NALTL-10 NALTL-30
<b>L1</b>	24V 48" LED Tape Light Segments (Each NUTP1-W16LED Roll contains (16) 12" detachable sections)	(1) NUTP1-W16LED(CCT) and (8) NUTP1-WLED(CCT)/12

\*Note: All drivers require power line interconnector to connect to tape.