

NM1-PRDC

1" M1+ Round LED Recessed Downlight

Source: 9W
600lm

PRODUCT DESCRIPTION

120V M1+ downlights features quality and convenience with easy installation for any application. Die-cast trims come standard in matte black or matte powder white and include a pre-wired junction box.

FEATURES

- No housing required - IC Air-Tight rated
- Easy installation for remodel or new construction applications
- Square trim accessory available
- Quick disconnect allows for extended lengths
- Delivering up to 600 lumens
- 2700K or 3000K @ 90+ CRI
- 120V input; Triac or ELV dimming
- 5-year limited warranty
- cETLus Listed for Wet Locations

SPECIFICATION

Construction: Die-cast aluminum trims available in matte black or matte powder white finish. Optional square trim can be changed in field, ordered separately.

Air Flow Restriction: Luminaire restricts airflow from room into ceiling plenum to <2CFM (cubic feet per minute) in accordance with ASTM-283 Air-Tight requirements.

Clearance: IC rated luminaires are rated for direct contact with insulation (not spray foam insulation), no minimum clearance is required.

Junction Box: Pre-wired junction box includes quick connect to LED fixtures for ease of installation. Junction box includes one 1/2" trade size knockout and snap on cover with 18" quick connect wire. Luminaire includes 6" quick connect wire. **Maximum length between luminaire and driver is 40'. For longer remote driver remote run length, consult factory.**

Mounting: No housing is required, two tensions steel spring clips secure luminaire to ceiling. Accommodates ceiling thickness up to 3/4".

ELECTRICAL

Input Voltage: 120V

Lumens / Wattage: 600lm / 9W

Color Temperature: 2700K or 3000K

Color Rendering Index: 90+ CRI

Operating Temperature: 0-30°C

Dimming: Triac or ELV

[Click Here](#) or check complete dimmer list at www.NoraLighting.com in the "Compatibility" page under "Resources" tab

OPTIONAL ACCESSORIES

NM1-PSDT: Square Trim for NM1-PRDC

NF-R2: New Construction Frame-In (optional)

NMA-EW-4: 4' Quick Connect Linkable Extension Cable

NMA-EW-10: 10' Quick Connect Linkable Extension Cable

LABELS AND LISTINGS

- cETLus Listed for Wet Locations
- [5-Year Limited Warranty](#)
- FCC compliant
- Certified to the high efficacy requirements of California Title 24 JA8-2022



Type

Project

Catalog No.

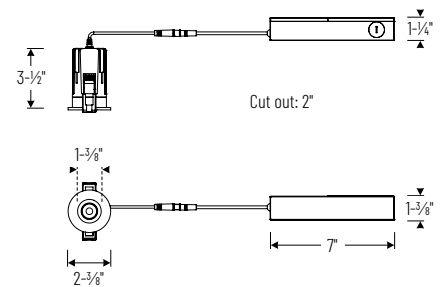
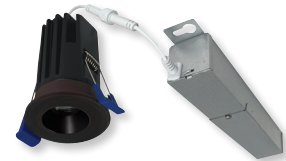
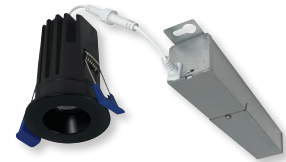
Notes

Performance Data

Part Number	Lumens	CCT
NM1-PRDCL130BB	597lm	3000K
NM1-PRDCL130BZ	553lm	3000K
NM1-PRDCL130MPW	612lm	3000K

Delivered lumens will vary depending on CCT

PRODUCT IMAGES AND DIMENSIONS



NM1-PSDT
Square Trim for NM1-PRDC

1" M1+ Round LED Recessed Downlight

Trim Type	Lumens / Wattage	Color Temperature / CRI	Finish
NM1-PRDC = 1" Round Downlight	L1 = 600lm / 9W	27 = 2700K / 90 CRI 30 = 3000K / 90 CRI	BB = Matte Black BZ = Bronze MPW = Matte Powder White

Optional Accessories

Accessory Type	Finish
NM1-PSDT = Square Trim	BB = Matte Black BZ = Bronze MPW = Matte Powder White
NMA-EW-4 = 4' Quick Connect Extension Cable	
NMA-EW-10 = 10' Quick Connect Extension Cable	
NF-R2 = New Construction Frame-In	

Example: **NM1-PRDCL130MPW** = 1" M1+ Round LED Recessed Downlight, 600lm / 9W, 3000K / 90 CRI, Matte Powder White

NM1-PRDC

1" M1+ Round LED Recessed Downlight Accessories

Type	_____
Project	_____
Catalog No.	_____
Notes	_____

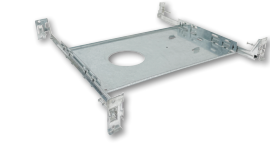


Square Trim for NM1-PRDC

- NM1-PSDTBB
- NM1-PSDTBZ
- NM1-PSDTMPW

Converts the round trim included with NM1-PRDC into a square trim

- Matte Black
- Matte Bronze
- Matte Powder White



New Construction Frame-In for NM1-PRDC

NF-R2

New construction frame-in can be used to assist installing can-less recessed downlighting. Helps indicate wiring location and cutting guide.

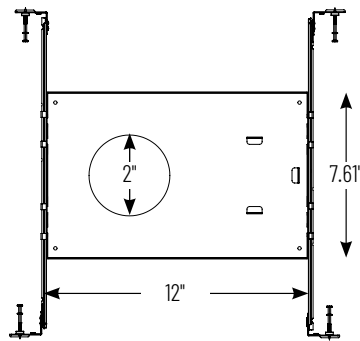


Quick Connect Extension Linkable Cables

- NMA-EW-4
- NMA-EW-10

- 4' Cable
- 10' Cable

Use to extend the length between luminaire and driver enclosure. Can be connected together to create custom lengths. Maximum length between luminaire and driver is 40'. For longer remote driver remote run length, consult factory.



PHOTOMETRICS

1" M1+ Round LED Recessed Downlight

Type

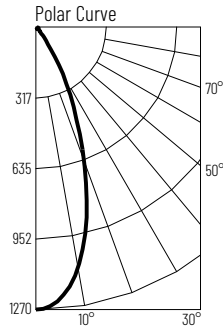
Project

Catalog No.

Notes

Test Information

Test Number: NTR1996R1
 Part Number: NM1-PRDCL130BB
 Beam Spread: 40° Narrow Flood
 Lumens: 597lm
 Wattage: 8.3W
 Efficacy: 72lpw
 CCT / CRI: 3000K / 90 CRI
 Spacing Criteria (0°-180°): 0.66
 Spacing Criteria (90°-270°): 0.66



Illuminance at a Distance

Distance from Luminaire	FC at Nadir	Beam Diameter
4'	79.3fc	2'-11"
6'	35.3fc	4'-4"
8'	19.8fc	5'-10"
10'	12.7fc	7'-2"
12'	8.8fc	8'-7"

Zonal Lumen Summary

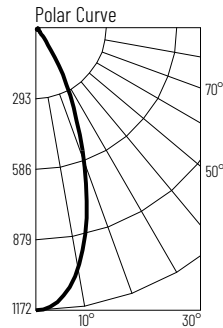
Zone	Lumens	% Luminaire
0-30	527	88.3
0-40	579	97.1
0-60	596	99.9
0-90	597	100
90-180	0	0
0-180	597	100

Candela Table

Vertical Angles	Candela
0	1270
5	1227
15	881
25	379
35	78
45	14

Test Information

Test Number: NTR1998R1
 Part Number: NM1-PRDCL130BZ
 Beam Spread: 40° Narrow Flood
 Lumens: 553lm
 Wattage: 8.28W
 Efficacy: 67lpw
 CCT / CRI: 3000K / 90 CRI
 Spacing Criteria (0°-180°): 0.66
 Spacing Criteria (90°-270°): 0.66



Illuminance at a Distance

Distance from Luminaire	FC at Nadir	Beam Diameter
4'	73.2fc	2'-11"
6'	32.5fc	4'-4"
8'	18.3fc	5'-8"
10'	11.7fc	7'-2"
12'	8.1fc	8'-7"

Zonal Lumen Summary

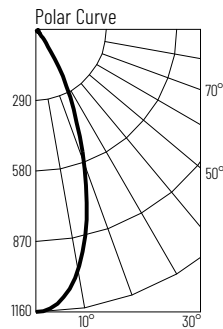
Zone	Lumens	% Luminaire
0-30	485	87.8
0-40	535	96.8
0-60	552	99.9
0-90	553	100
90-180	0	0
0-180	553	100

Candela Table

Vertical Angles	Candela
0	1172
5	1132
15	810
25	349
35	75
45	14

Test Information

Test Number: NTR2000R1
 Part Number: NM1-PRDCL130MPW
 Beam Spread: 40° Narrow Flood
 Lumens: 612lm
 Wattage: 8.6W
 Efficacy: 71lpw
 CCT / CRI: 3000K / 90 CRI
 Spacing Criteria (0°-180°): 0.66
 Spacing Criteria (90°-270°): 0.66



Illuminance at a Distance

Distance from Luminaire	FC at Nadir	Beam Diameter
4'	72.5fc	2'-11"
6'	32.2fc	4'-5"
8'	18.1fc	5'-11"
10'	11.6fc	7'-4"
12'	8.1fc	8'-10"

Zonal Lumen Summary

Zone	Lumens	% Luminaire
0-30	500	81.7
0-40	566	92.5
0-60	602	98.4
0-90	612	100
90-180	0	0
0-180	612	100

Candela Table

Vertical Angles	Candela
0	1160
5	1122
15	809
25	380
35	103
45	26

Lumen Output Multipliers

CCT: 2700K (0.92), 3000K (1.00)